



## pterygium and pinguecula

a closer look

### WHAT ARE PTERYGIUM AND PINGUECULA?

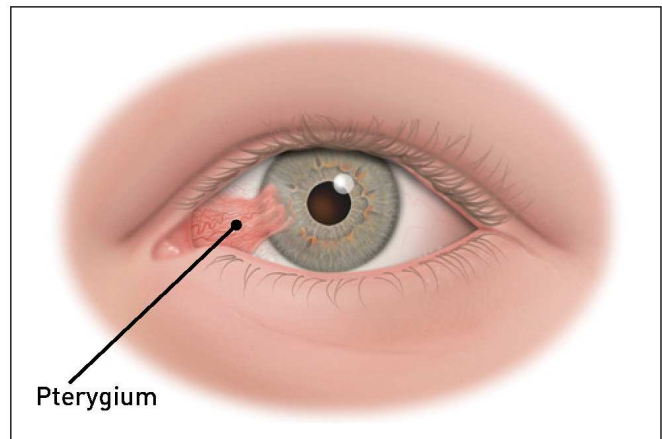
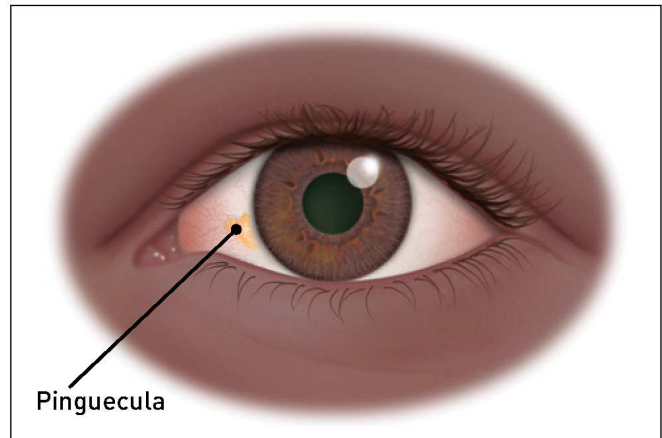
Pterygium (pronounced tur-IJ-ee-um) and pinguecula (pronounced pin-GWEK-yoo-la) are growths on the cornea (the clear front window of the eye) and the conjunctiva — the thin, filmy membrane that covers the white part of your eye (sclera).

Both types of growths are believed to be caused by dry eye and environmental elements such as wind, dust, and ultraviolet (UV) light.

### WHAT IS THE DIFFERENCE BETWEEN A PTERYGIUM AND A PINGUECULA?

A pinguecula is a yellowish patch or bump on the conjunctiva, most often on the side closest to the nose. It is a change in the normal tissue that results in a deposit of protein, fat and/or calcium. It is similar to a callus on the skin.

A pterygium is a growth of fleshy tissue, often arising from a pinguecula, on the conjunctiva that extends over the cornea. This growth may remain small or grow large enough to interfere with vision.



### WHAT ARE THE SYMPTOMS OF PTERYGIUM AND PINGUECULA?

Symptoms of both pterygium and pinguecula can range from mild to severe and may include:

- Redness, inflammation or both, especially during the growth of a pterygium;
- Blurred vision;
- Irritation;
- Dryness;
- Itching;
- Burning;
- Gritty feeling;
- Feeling of having foreign material in your eye.

### HOW ARE PTERYGIUM AND PINGUECULA TREATED?

In many cases, no treatment is needed. When a pterygium or pinguecula becomes red and irritated, eyedrops or ointments may be used to help reduce inflammation. If the growths become large enough to threaten sight or cause persistent discomfort, they can be removed surgically. They are also sometimes removed for cosmetic reasons.

Despite proper surgical removal, pterygium or pinguecula may return. Surface radiation or medications are sometimes used to help prevent recurrences. However, the best way to avoid recurrences is to limit exposure to the environmental factors that contribute to their growth.

This includes:

- Adequately protecting your eyes from excessive UV light with proper sunglasses;
- Protecting your eyes in dry, dusty conditions with proper eyewear;
- Applying artificial tears to your eyes in dry conditions.

### NOTES

#### COMPLIMENTS OF:

The Eye Center of Central Pa.  
Toll Free: 1.866.995.3937  
[www.eyecenterofpa.com](http://www.eyecenterofpa.com)

#### Academy reviewed 09/11

© 2011 American Academy of Ophthalmology. The American Academy of Ophthalmology, The Eye M.D. Association and the Academy logo are registered trademarks of the American Academy of Ophthalmology.